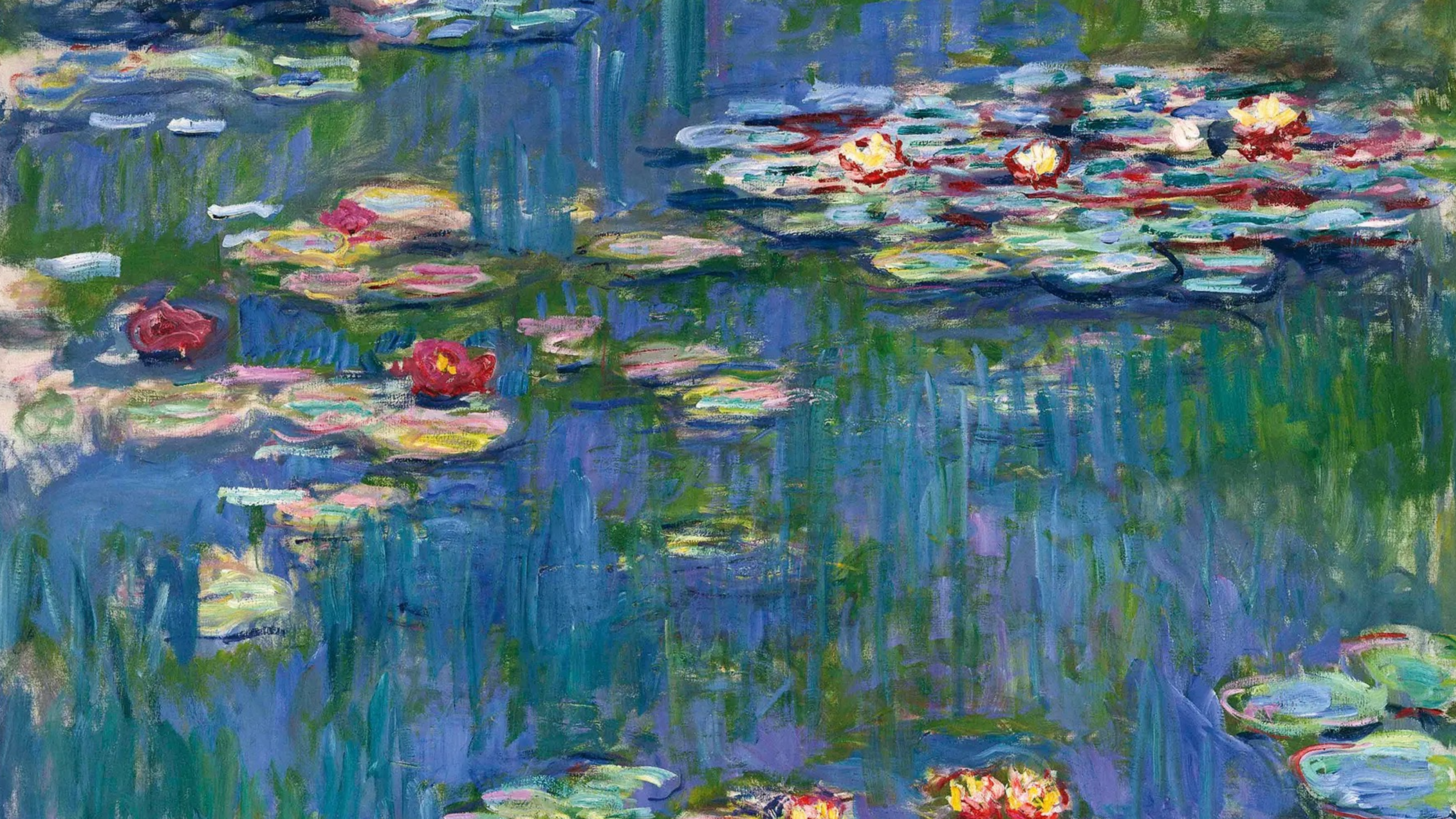




**AI ADVANTAGE
DR. FLORIAN ILGEN, CSP**



ORIGINAL VIDEO



GENERATED VIDEO

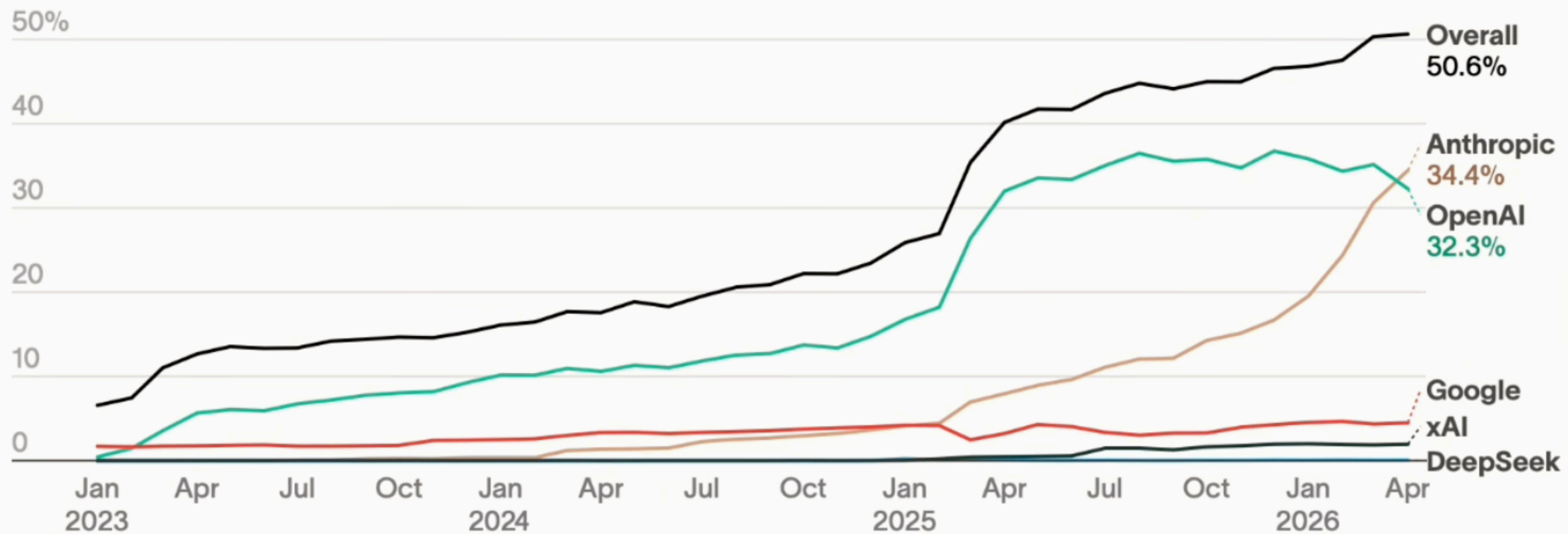


THE BATTLE OF AI

Anthropic beats OpenAI

According to Ramp AI Index, more businesses used Anthropic than OpenAI for the first time in April.

Share of U.S. businesses with paid subscriptions to AI models, platforms, and tools



Source: [Ramp AI Index](#), business spend data from Ramp. Overall includes businesses subscribed to any AI product or service based on Ramp spend data. • [Get the data](#)





THE PROMISING RISE: AGENTIC AI

- From \$11B in 2026 to \$220B in 2034
- By end of 2026 1B agents in use
- Save time (15d to 35 min)



ANDREJ KARPATY: LOOPY ERA

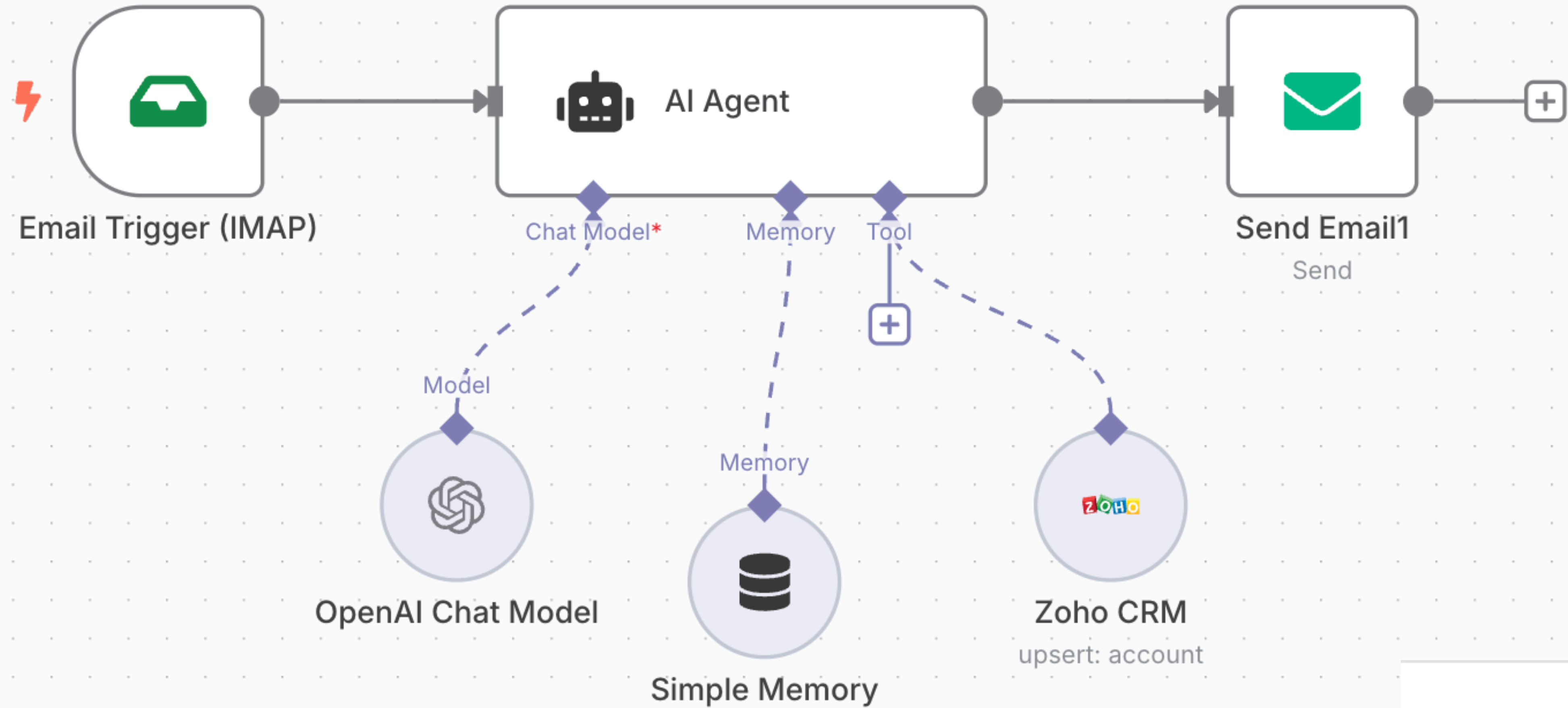
- Vibe Coding
- Jagged Intelligence
- Loopy Era - AutoResearch



JENNY ZHANG: HYPERAGENTS (DGM)

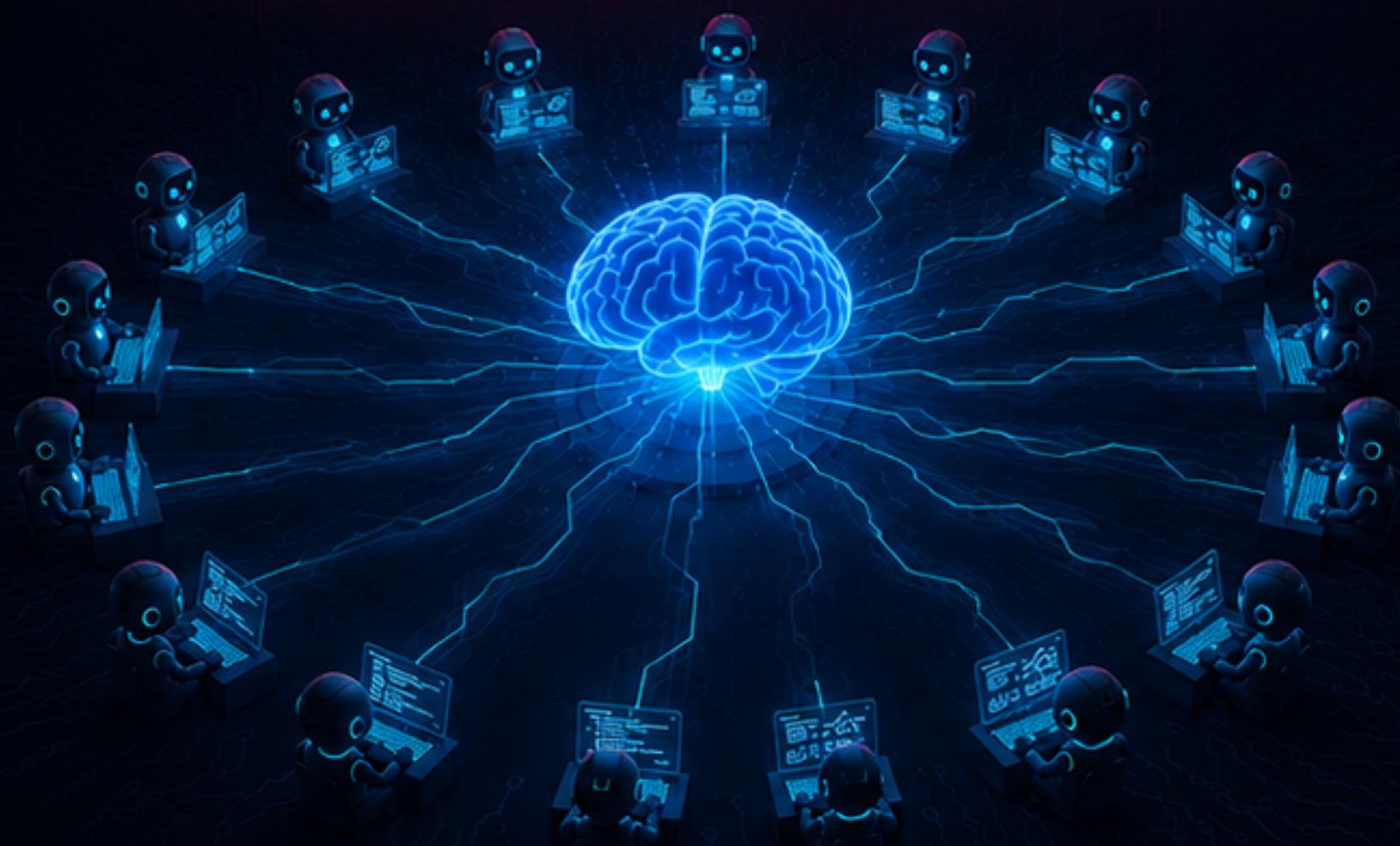
- Improves HOW it improves
- Keeps agent versions
- Evolution of the problem-solver
- From 20% to 50% SWE-Bench Score

N8N AGENTS:





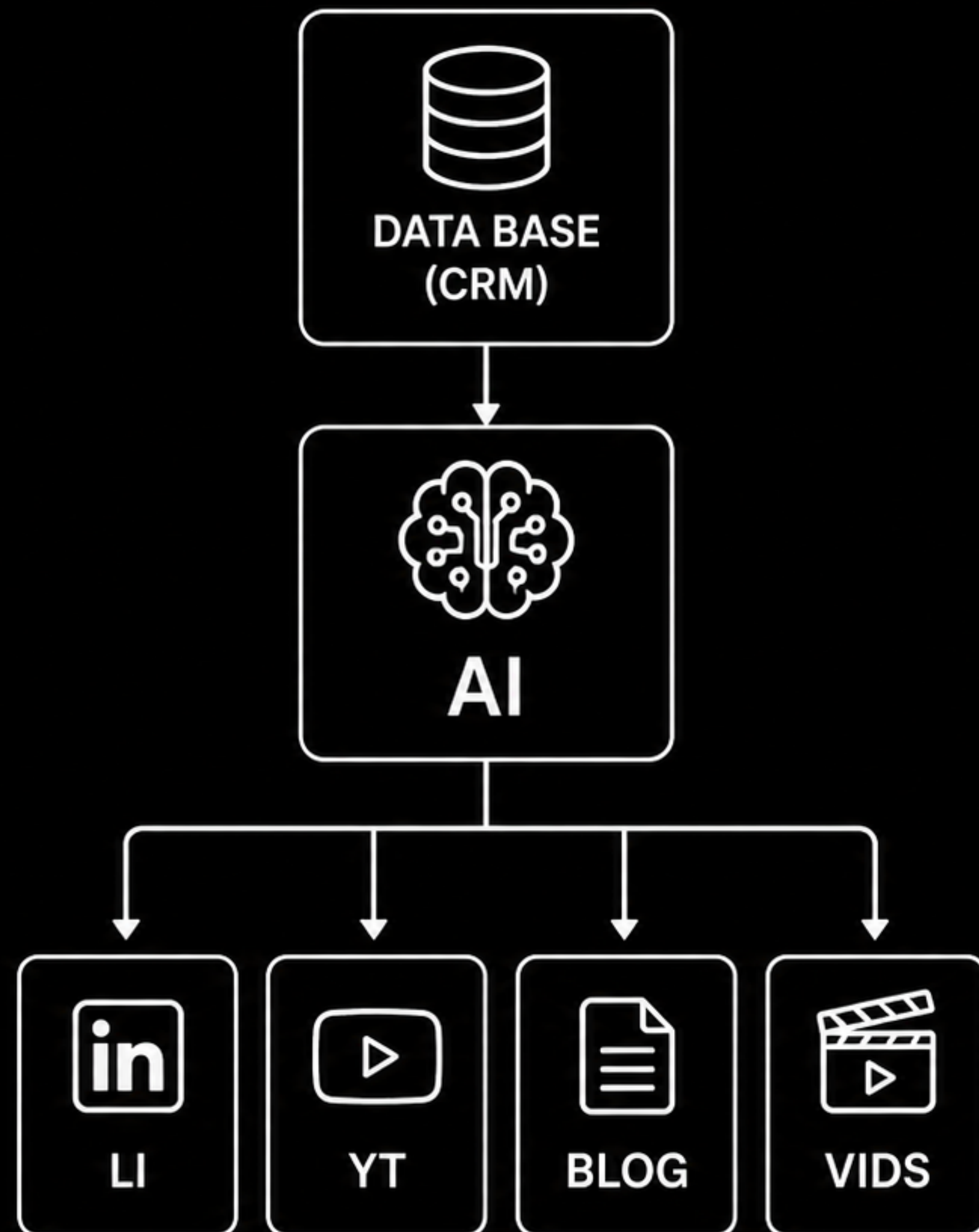
RUFLOW: MULTI-AGENT ORCHESTRATOR



- 60+ agent swarm
- Parallel Swarm Coordination
- Sharing one common layer memory
- Token reduction by 75%
- SWE-Bench Score: 84,5%!

GitHub: github.com/ruvnet/ruflo

REVERSE DEMAND CONTENT ENGINE



- Creation of ICP based on DB
- Enrichment with LinkedIn, service intel
- AI creates converting pillar content
- Carve out segments and auto post
- Touch point cover (7 -> 30+)
- AIO boost



@SHL0MS

Automated by @s8n



i just generated an image in the style of a Monet painting using AI

please describe, in as much detail as possible, what makes this inferior to a real Monet painting



Made with AI

12:20 PM · May 12, 2026 · 1.6M Views

AI SENTIMENT DYNAMICS



Azuri
@AzuriSplashes



Sure. It feels less lively. It lacks the texture, the rugged edges, the folds, the crevices and creases and bevels and topology of plastic arts. The



Margot
@para_dim3



Depth, contrast, and cohesion are the most obvious. There's also no clear focal point.



@egg_oni



I'm disappointed I have to even point it out. There is no cohesion to the depth and color choices. The reflection of the tree bleeds into the lily pads with no regard for spatial depth or contrast. The background lily pad-algae amalgam is egregiously vague, like most AI art.



Yugansh
@Polymind_



Agree with some of the answers. Also there is no consistency in colour choice. The view looks obscured perspective wise and feels like there is too much detail in the AI version, which if I am thinking correctly comes back again to the colours being so distinct and contrasty.



AI SENTIMENT DYNAMICS

The use of AI thrives on trust -
NEVER destroy it!

PROF. JÜRGEN SCHMIDHUBER



- Pioneer laying the ChatGPT foundation
- AGI as a vision since teenager
- 2042: Singularity & Intelligence Explosion
- AI-Robotics limitation



LIVE



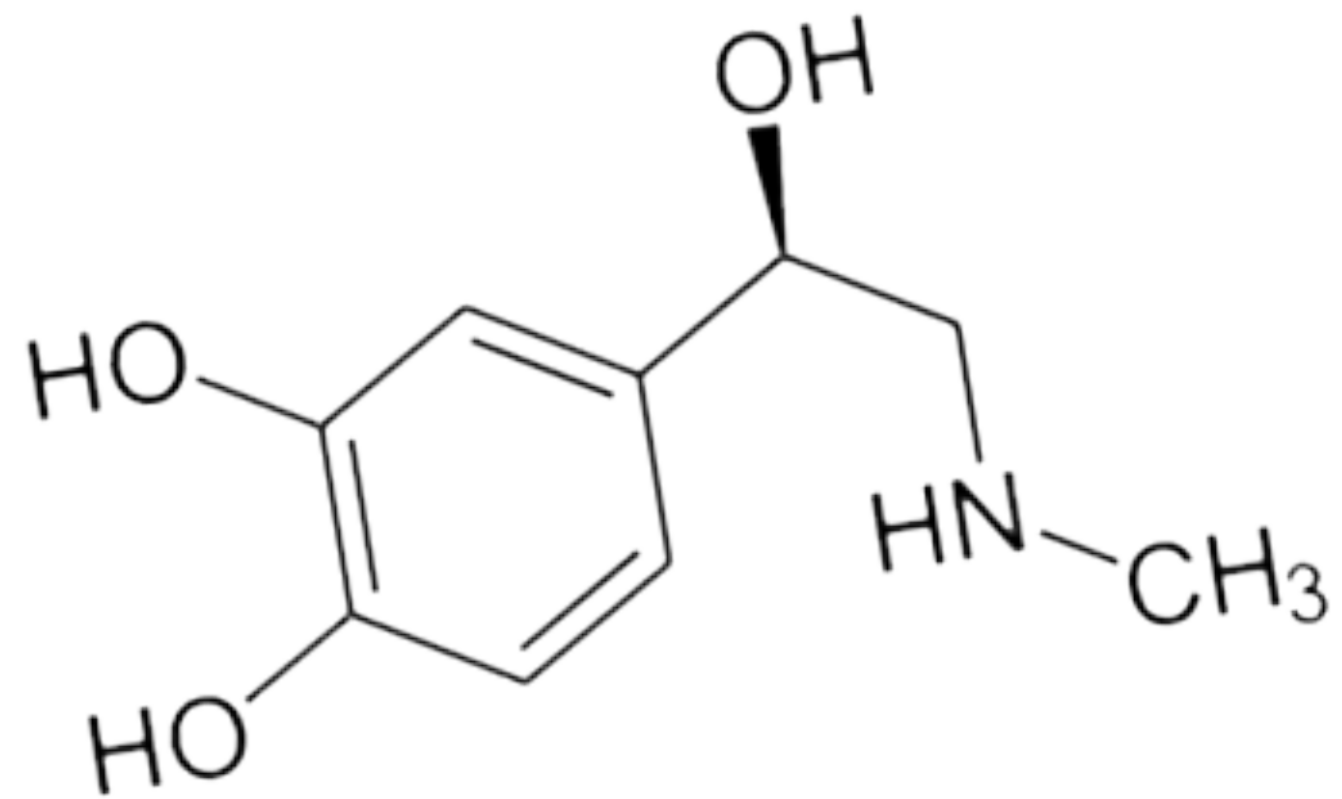
HRS.MIN.SEC

40:15:39

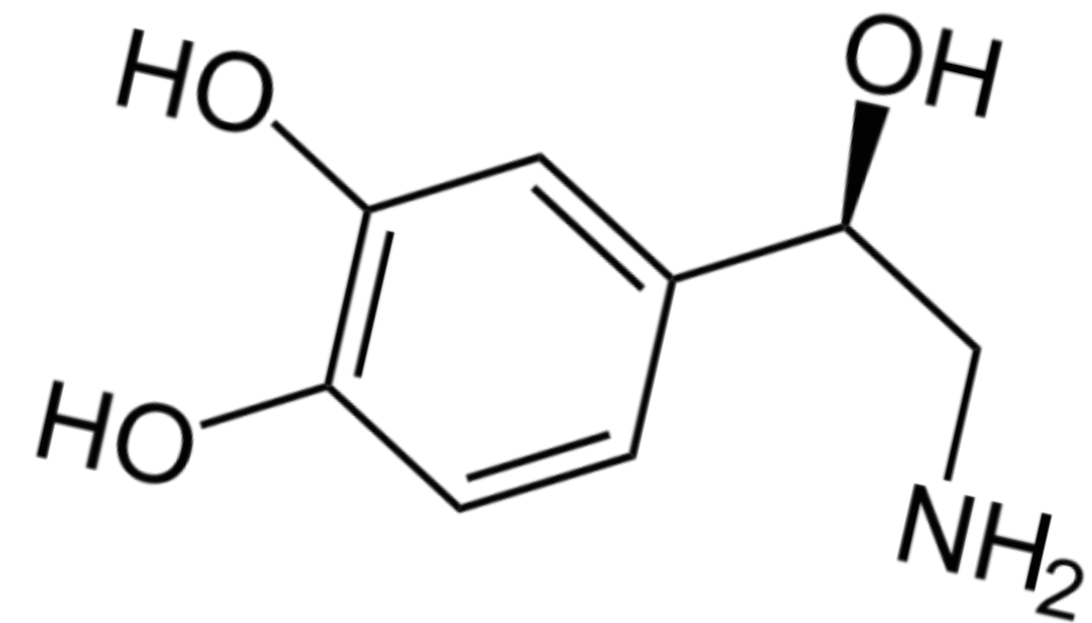
PACKAGES

50,323

THE TWO CULPRITS



Adrenaline



Noradrenaline

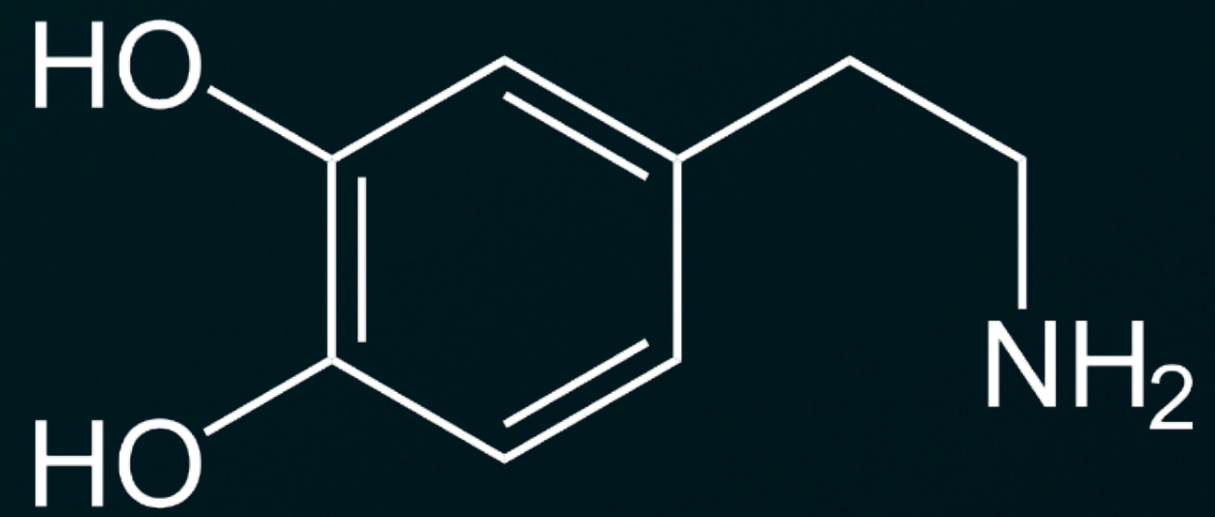
SELECTIVE MEMORY

"The memories we focus on
shape our results."

FEARLESS CURIOSITY

"The only real mistake is the one from which we learn nothing."

FEARLESS CURIOSITY



Dopamine



SECURE YOUR PERSONAL CHANGE ADVANTAGE NOW

